

# Los Osos/Baywood Fire Prevention Education Town Hall

Be prepared, Be Informed, Know Before You Go,  
Don't Procrastinate!

# Be Prepared!



[This Photo](#) by Unknown Author is licensed under [CC BY-SA-NC](#)

# Be Informed





# Know Before You Go



[This Photo](#) by Unknown Author is licensed under [CC BY](#)



# Evacuate/Shelter In Place



[This Photo](#) by Unknown Author is licensed under [CC BY-NC-ND](#)

# Los Osos/Baywood Focus Group Chair

- Jose Torres

- Background

- SLO County FSC Focus Group Chair
- Fire Chief/Emergency Manager (Retired) 37 years in Fire Service
- U.S. Air Force Veteran (Firefighter) Vandenberg Hot Shot
- 1992-95 Ventura Flooding Events
- 1992 Los Angeles Civil Unrest (LA Riots, April 1992) Compton, CA
- Santa Monica Farmers Market Mass Casualty Event (July 2003)
- Jesusita Wildland Fire Santa Barbara STL (2009)
- Santa Monica Synagogue Explosion, Incident Commander (2011)
- Santa Monica Active Shooter/Mass Casualty Event (2013)
- Retired 2017 Fire Chief, Northbrook, Illinois



# 10:00-10:05 Introduction

- Welcome
- Speakers/Attendees
- Topics
- Questions/Limited Time
- Follow up/Sign up
- Closing
- Breakout Sessions

# Topics

- Los Osos Community Service District Weed Abatement Ordinance 2023-01 January 2023
- Special Fire Tax Ordinance 2005-01/LOCSD Resolution 2023-26
- Defensible Space/Weed Abatement-Break Out Session
- Home Hardening: What you can do to prepare
- Evacuation Preparedness
- Reverse 911
- Declaration of an Evacuation
  - Who is responsible for initiating the evacuation
  - Shelter in Place
- Shelter in Place
- Safe Zone/Genasys Protect
- Phone Apps to keep you informed/Watch Duty
- SimTable Demo-Two Ignition Points
- (Home Property Insurance Concerns-Breakout session)



# Attendees

- Congressman Salud's Carbajal Office-Greg Hoss
- County Supervisor Bruce Gibson
- CalFire Unit Chief John Owens
- CalFire Battalion Chief Paul Provence/Station 15 Crew
- Los Osos Community Service District Manager, Ron Munds
- San Luis Obispo County OES, Keith Aggson
- SLO County Fire Safe Council Executive Director Dan Turner
- SLO County Sheriff's Dept. Deputy Shipman
- California Highway Patrol, Officer Toby Adrianse
- Dept. of Fish and Wildlife, Deborah Kirkland
- SLO County Fire Safe Council Focus Group Coordinator, Baxter Boyington

# Attendees Continued

- SLO County FSC SimLab Cadre, Greg Alex, David Kay, Nate Herring, Tom Wright, Doug Forrest, Baxter Boyington, Blair Gillespie
- Cabrillo Estates Fire Wise Community Coordinator, Ken Delfino
- All Risk Shield President, Joe Torres
- Insurance Industry Expert, Stacy Korsgaden



# Program Flow

- 10:05-10:10: Supervisor Gibson-County Fire Prevention Initiatives
- 10:10-10:20: SLO FSC Chief Dan Turner-FSC Projects
- 10:20-10:30: CalFire Unit Chief John Owens-SLO County Fire Dept.
- 10:30-10:45: CalFire Battalion Chief Paul Provence/Ron Munds-Weed Abatement Ordinance 2023-01/Title 4 of the LOCS District Code/Enforcement
- 10:45-10:55: Keith Aggson-Zone Haven/Evacuation Overview
- 10:55-11:10: All Risk Shield-Home Hardening/Fuel Reduction
- 11:10-11:20: Ken Delfino-Cabrillo Estates FireWise Program

# Program Flow

- 11:20-11:35: Greg Alex-Evacuation/Ready Set Go/Reverse 911/Phone Apps/Sheriff Notification
- 11:35-12:00: SLO County FSC SimTable Cadre- Simulation/2 Ignition Points
  - Baxter Boyington
  - David Kay
- 12:00-12:15 Q & A & Closing
- 12:15 Breakout Sessions

# Break Out Sessions

- Property Insurance-Stacy Korsgaden
- Dept. of Fish and Wildlife-Debra Kirkland
- Home Hardening/Fuel Reduction-All Risk Shield
- Emergency Notification Apps
  - Watch Duty
  - Pulse Point
  - Emergency Alert
  - RedFlag etc.

**CABRILLO ESTATES**

**FIREWISE COMMUNITY**



**FIREWISE USA®**

**Residents reducing wildfire risks**





Image © 2010 DigitalGlobe

2010

# CABRILLO COMMUNITY ANALYSIS AVAILABLE

[www.cepoalososos.com](http://www.cepoalososos.com)

“issues” - Fire

# HOW TO BECOME A FIREWISE COMMUNITY

Application on NFPA web site

Create a community board or committee

Define your site

Complete a community risk assessment

Create a three-year action plan

Liaison with local fire authorities

Review and approval by CalFire

Firewise community is required to update  
our action annually

Designation is for 5 years



# What does Firewise do for Community

Some insurance offers a discount

Some residents **do** pay attention to information and improve their properties

Recognition by the SLO Fire Safe Council helps get projects funded

# PROJECTS IN Cabrillo

Chipping events

Vegetation reduction projects completed

Fire Hazard signs

Information via email blasts to residents



# San Luis Obispo Unit

# STATE MISSION

# STATE MISSION

- SRA acres protected **Approx. 1.5 Million**
- FRA acres protected **Approx. 550 k**
- 10 State Fire Stations
- 1 CoOp Fire Station (Pismo)
- 12 Fire Engines
- 3 Bulldozers
- 1 Fire Camp (Cuesta)
- 2 CCC Fire Centers ( Toro, Camarillo)
- 1 CMD Fire Center (Camp Roberts)
- 1 Fire Training Center ( Ventura)
- 1 Air Base
- SBC and VNC SRA
- 205 Personnel





# SCHEDULE A MISSION





# SCHEDULE A MISSION

- Sq Miles Protected **Approx. 3,100 k**
- Population Protected **Approx. 120,000 k**
- 12 County Fire Stations - 3 State / County Fire Stations (20, 30, 40)
- 13 staffed Fire Engines
- 2 Heavy Rescues
- 1 Dunes Rescue Squad
- 3 Water Tenders
- 1 Aircraft Rescue Fire Fighting (ARFF)
- 1 Hazardous Material Vehicle
- 2 Rescue Watercraft
- 1 Fire Rescue Boat
- Personnel
  - 107 Paid





- Diablo Nuclear Power Plant
- Two Oil Refineries
- Cal Poly
- San Luis Obispo Regional Airport
- 83 miles of shoreline Protected
- Los Padres NF
- 250 Wineries and venues
- Pismo Beach
- Oceano Dunes
- San Simeon
- Hearst Castle







# San Luis Obispo County Incident Activity 2023

---



# Incident Activity 2023

---

• Wildland Fires	191
• Structure Fires	119
• Fire – Other	1,447
• Medical	15,230
• FMS –HazMat	819
• LE Activity	266
• Public Svc	2,461
<b><u>Total Incidents</u></b>	<b>20,533</b>







# Los Osos Fire Activity 2023

- Structure Fires : 15
- Vegetation Fires: 4
- Vehicle Fires: 14
- Other Fires: 6



# Los Osos Weed Abatement

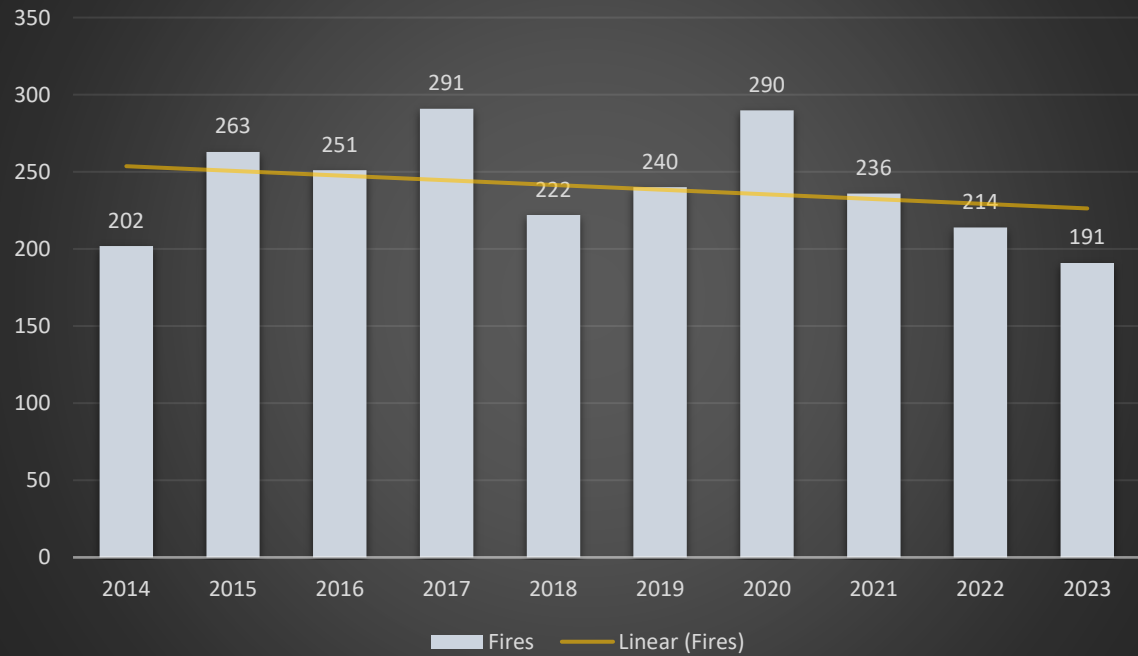
---

- 6012 Parcels
- 634 vacant lots
- Inspections
  - 325 Passed
  - 309 Failed
  - Reinspection's in process

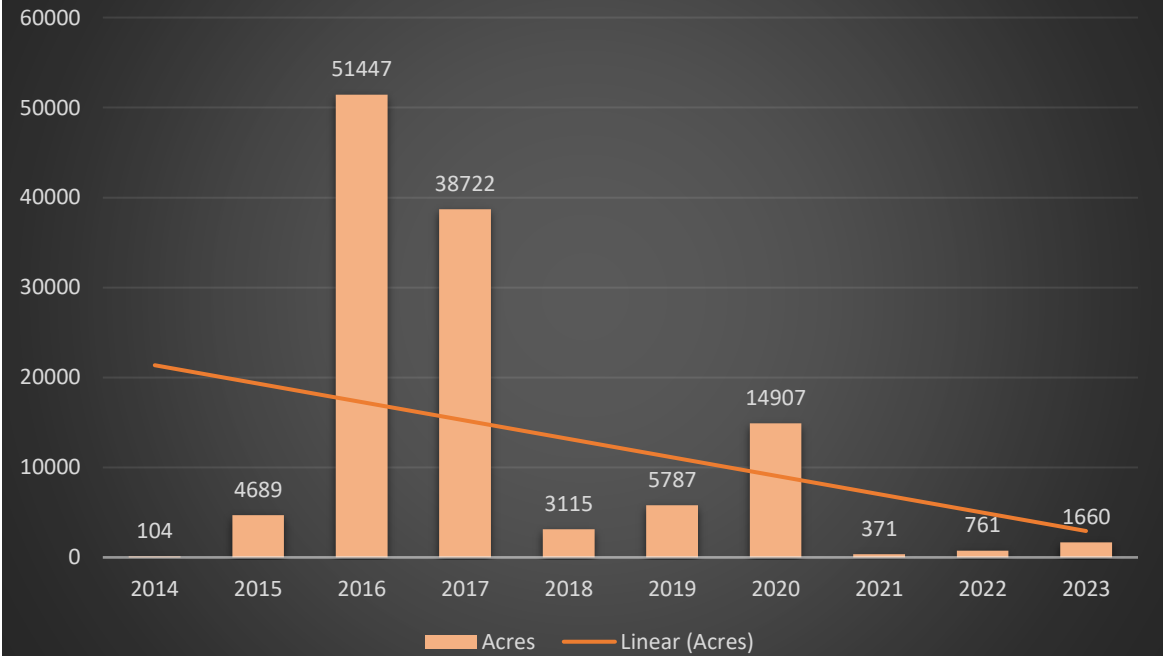


# Historical Fire Data

## Fires by Year



## Acres by Year



# What is the major cause of wildfires?

---

- Humans cause nearly 90% of wildfires in the United States via discarded cigarettes, unattended campfires, burning debris, or through equipment malfunctions. Although less common, wildfires can also occur through non-human phenomena, such as lightning strikes and volcanic eruptions.
- USFS research confirms most CA fires occur in areas of WUI with sparse or no vegetation, but more people.





# Countywide Defensible Space Inspections 2024



- Total Inspections : 9,013
- Compliant Totals: 8,727
- Non-Compliant Totals : 286
- Visit :
- <https://readyforwildfire.org/>
- Home Hardening
- Defensible Space
- Ready, Set, Go!
- CAL FIRE APP



## 2024 Year to date CA wildfire Statistics

- CALFIRE & Federal
- Fires 4,767 (+40)
- Acres
- 777,128 (+4,796)
  
- 2023 Totals
- Fires 3,898
- Acres 112,059





Questions?

---



# San Luis Obispo County Community Fire Safe Council



*501 (C) (3) Not for Profit organization*

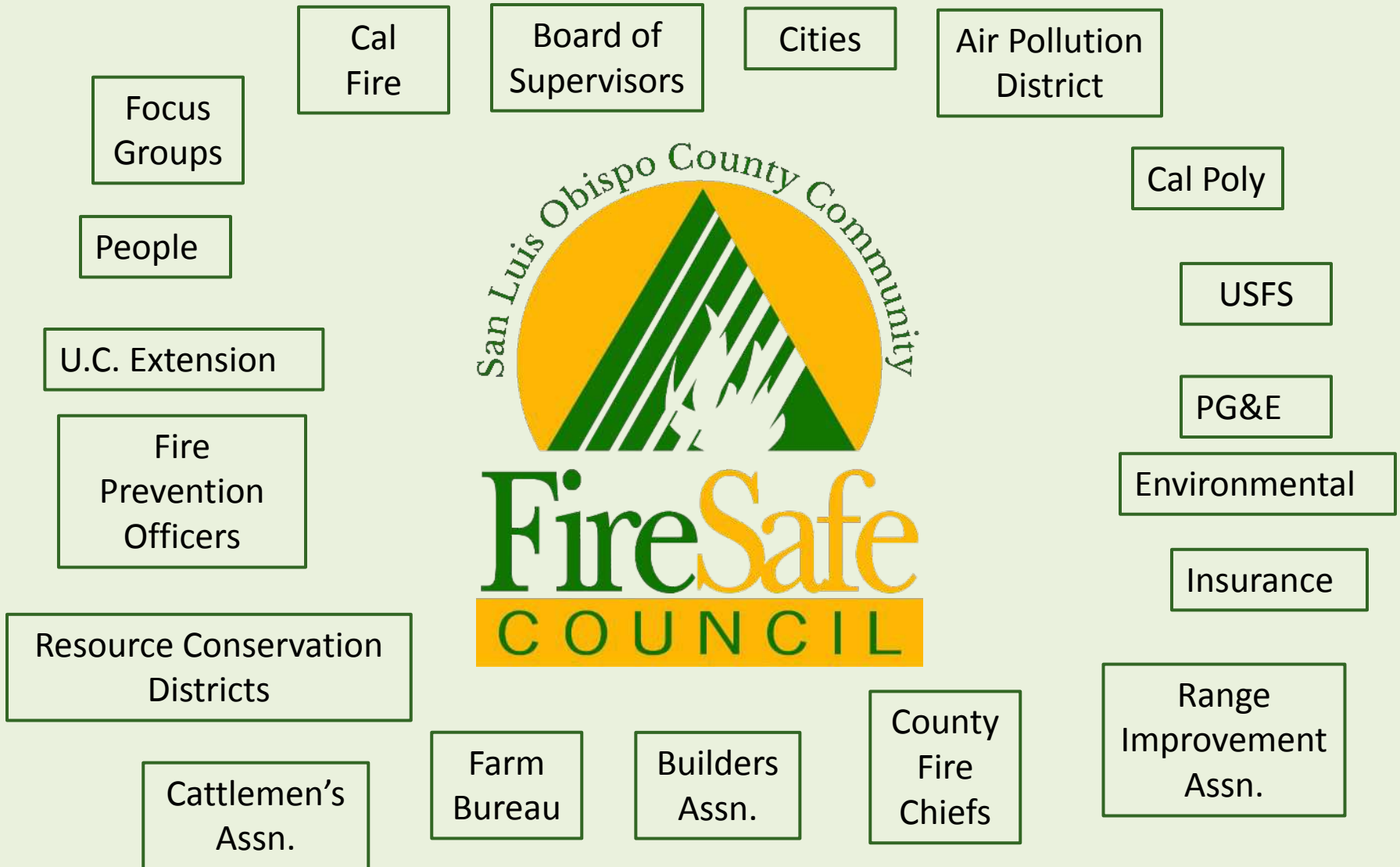
## **Mission:**

**“The San Luis Obispo County Fire Safe Council, Inc. is a diverse collaborative group dedicated to creating a Fire Safe environment through education, partnerships, and action”**

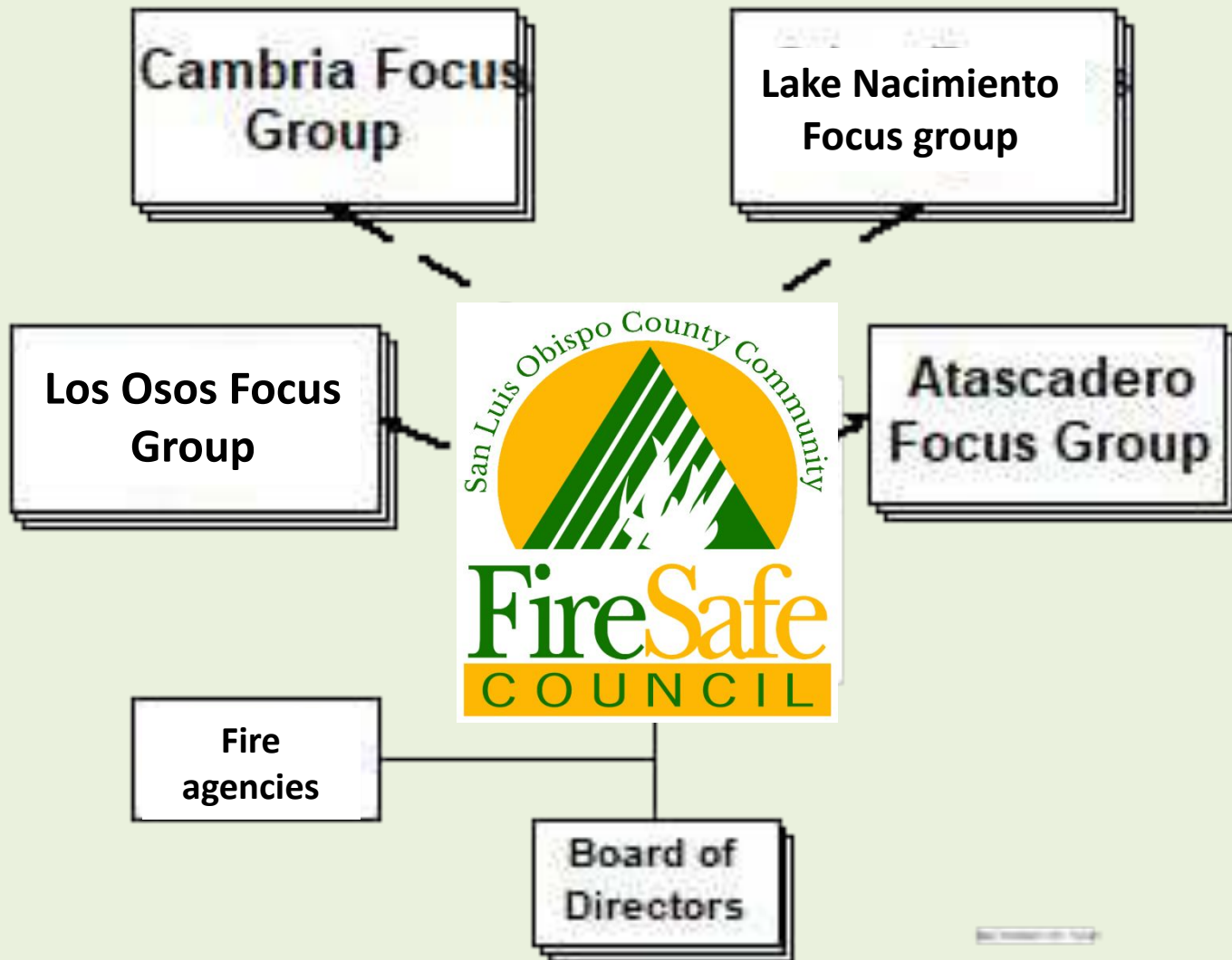


***501 (C) (3) Not for Profit organization***

# SLO County Fire Safe Council



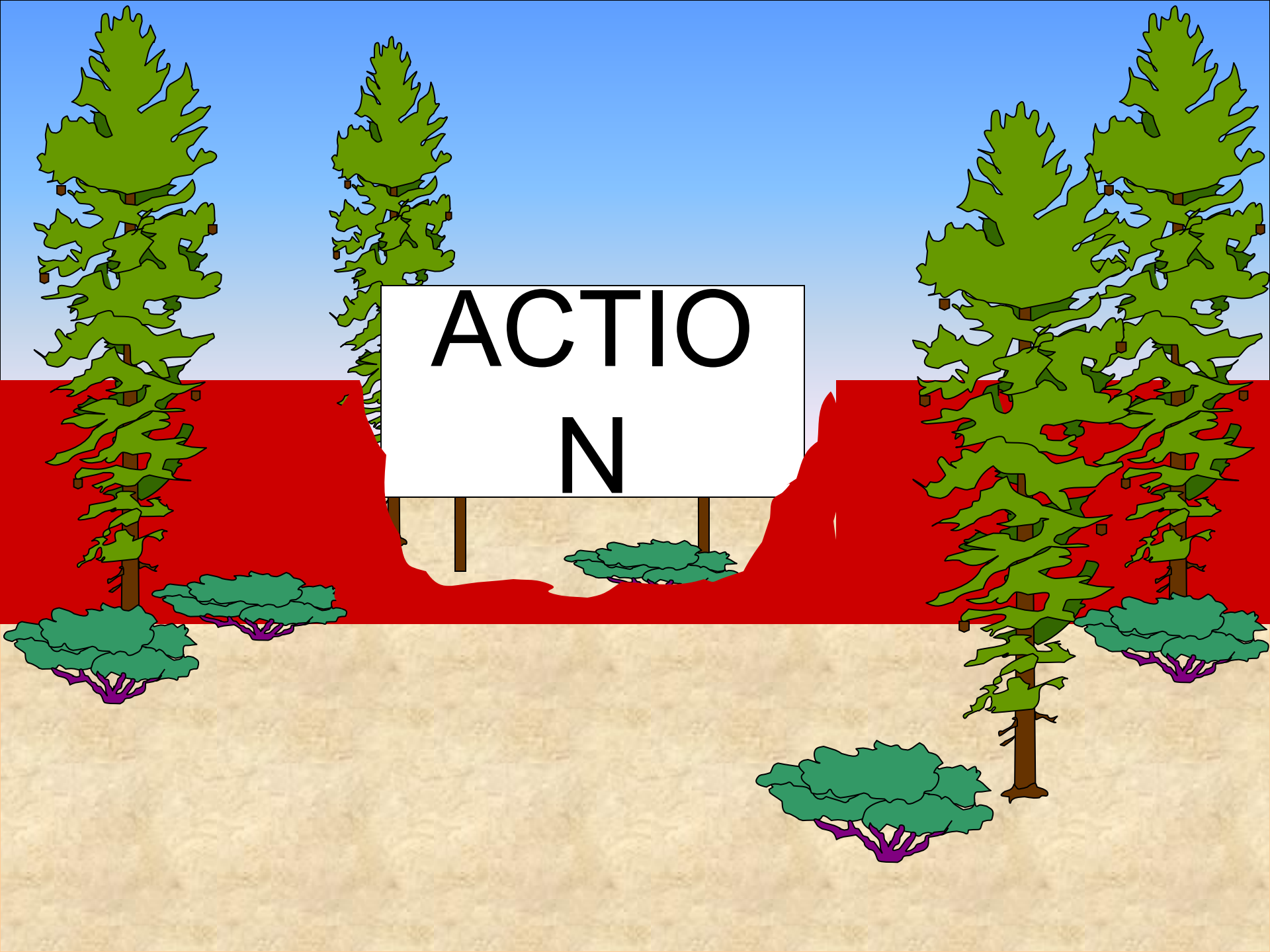
# Focus Groups





**ACTIO**

**OBSTACLE**



ACTIO  
N



# Defensible Space





Caused by flying embers!





# Evacuation plan

## Prepare Now

- Have an escape plan. Know where to meet your family.
- Provide defensible space around structures for a distance of at least 100 feet or to property line.
- Clear flammable materials from rain gutters and roof.
- Trim tree branches at least 10 feet from chimney.
- Eliminate potential for ember intrusion into attic and concealed places by retrofitting vents and other openings with approved vents and screening. Contact the fire department for details.
- Clear at least 10 feet around propane tanks.
- For more information on legal requirements see [www.calfireslo.org](http://www.calfireslo.org)
- Replace flammable vegetation with less flammable plants. (See <http://www.bewaterwise.com/fire.html> for fire-resistant plant suggestions.)
- Use fire resistant materials for roofing and siding.
- Move wood piles and down trees away from house.
- Make sure your water tank is full and the hydrant is accessible and marked with a blue reflector.
- Have garden hose and ladder available that will reach the roof.
- Locate escape routes and Safe Refuge Areas. (See map inside.)
- Choose an out-of-area friend or relative as a check-in contact. Write his/her name and phone number on the phone list inside.

## Evacuation Procedures

- **EVACUATE EARLY!**
- Citizens may be notified by fire personnel and/or law enforcement personnel if evacuation is necessary.
- Safely make your way out of the area. If unable to evacuate completely, go to the closest Safe Refuge Area (see map).
- The Red Cross will establish evacuation centers.
- If evacuated, contact the Red Cross to provide information about your status so that family or friends can be informed.
- **MOST IMPORTANTLY, if you feel unsafe, don't wait. Follow the checklist items and get out.**

## If You Become Trapped

### In your home:

- Stay inside until the fire passes.
- Close all windows.
- Keep all doors closed, but unlocked.
- Keep family together and remain calm.
- Remember, if it gets hot inside your house, it will be much hotter outside.

### In your car:

- Park away from vegetation.
- Roll up windows.
- Cover mouth with dry cloth to protect airway.
- Cover yourself with a blanket or jacket.
- Stay in the car until the fire passes.
- If the vehicle catches on fire, exit only after the wildfire has passed.

### On foot:

- Find an area away from vegetation.
- Lie face down.
- Cover mouth with dry cloth to protect airway.

## After the Fire Passes

- Check the roof and exterior of your home, extinguish all sparks and embers.
- Check your attic for hidden embers.
- Check your yard for burning wood piles, trees, fence posts or other materials.

## Returning to Your Home

- Emergency Managers will decide when it is safe to return.
- Information will be available through the media, at road blocks, shelters, Safe Refuge Areas and the CAL FIRE information line.



635 North Santa Rosa St.  
San Luis Obispo, CA 93405

## Cambria Area

## Fire Evacuation Plan



You live in  
wildfire country...  
Are you prepared to evacuate?



# Don't forget ole Bessie...



# Hazard Fuel Reduction Projects

Funded through Grants from:

- **CAL FIRE-**
  - CA Climate Investment funds
  - Cap and Trade proceeds
- **PG&E**
- **State Coastal Conservancy**
- **Other funders (insurance, Federal)**



# Fire Safe Demo House-Mid State Fair



## Fire Safe DEMONSTRATION HOUSE



### This Land is Meant to Burn, Your Home Isn't

Wildfires, common in the chaparral landscape of California, do not know the difference between your home and the plants that need fire to be healthy. Fire is a powerful, natural force and its fury may be frightening, but it is essential for a healthy ecosystem.

However, these fires will burn through the brush and into your yard, driving embers down onto your roof. By building homes in

or near wildlands, we put ourselves at risk. Through careful design of our homes and proper maintenance of our yards, we can live more safely in a fire environment.

This fire safe demonstration house shows several types of building materials and different techniques you can use to make your own home and yard safer from flames and flying embers.



### FIRESAFE HOUSE MID-STATE FAIRGROUNDS PASO ROBLES, CALIFORNIA San Luis Obispo County Community FireSafe Council



#### ROOF VENTILATION

House used to illustrate. Ventilation is necessary to allow heat and moisture to escape from your home.

**ROOF VENTING**  
There are two types of roof ventilation systems used on this house. A fan baffle is used in front of a high profile turbine vent on the north side of the building. This fan system is considered to be the most fire safe. The baffle prevents flames from entering the attic. Every baffle and fan must be rated to use this baffle system.

**EMERGENCY VENTING**  
Eaves, or soffits, venting is used on this house to allow the fire safe demonstration house, then painted. The small holes in the fire-resistant board allow air to flow in that board and maintain a low oxygen level inside the house. This helps keep the fire from spreading into the attic.

**DORMER & GABLE VENTS**  
Other common forms of roof venting are high profile dormer vents and gabled attic vents. Neither of these building techniques are considered fire safe because they have large open spaces that allow fire, smoke, and heat to enter your home. Use this kind of ventilation, make sure the openings are covered with 1/2" x 1/2" wire mesh that is not damaged or plugged with debris.

#### WOOD STUD WALL

Drywall added to the outside of the studs and plywood, under the siding, helps fire wall come from roof flames for one hour. Minimum 4" of concrete.

**LOOK INSIDE!**  
The way that a home with wood stud walls and wood siding cannot be fire safe, but there are ways to improve the safety of a wood structure. Using drywall and fire-resistant paper of insulation and siding will add to the safety of your home.

**Next Steps and Best Practices:**  
Fire-resistant  
Drywall  
Fire-resistant  
Siding  
Fire-resistant  
Insulation

#### ICF WALL

This wall is made of rigid foam blocks filled with concrete. It is exposed to fire, a finished ICF wall can withstand heat and flames for two hours.

**LOOK INSIDE!**  
Insulated Concrete Forms walls are finished on the outside with a non-combustible material such as stone or plaster, gypsum drywall, or fiber cement board. Otherwise, the foam insulation would catch fire and burn away.

**Next Steps and Best Practices:**  
Fire-resistant  
Drywall  
Fire-resistant  
Siding  
Fire-resistant  
Insulation

#### STRAW-BALE WALL

This wall is made of straw bales, then covered with cement plaster. It is exposed to fire, fire wall can withstand heat and flames for two hours.

**LOOK INSIDE!**  
Bales of straw have been used, some to be stacked and plastered to create basins, garden walls, and even the large emergency-ventilated some storage basins before. The thick bales make good insulation, keeping heat in to winter and cool to maintain. Plaster is non-combustible, and the tightly compacted bales can smother if exposed to flames. Straw straw contains silica, making it the most fire-resistant. Straw is commercially grown, locally available, easily built, and re-planted naturally.

RECTANGULAR INTERPRETIVE PANELS  
90" x 36" x .25"

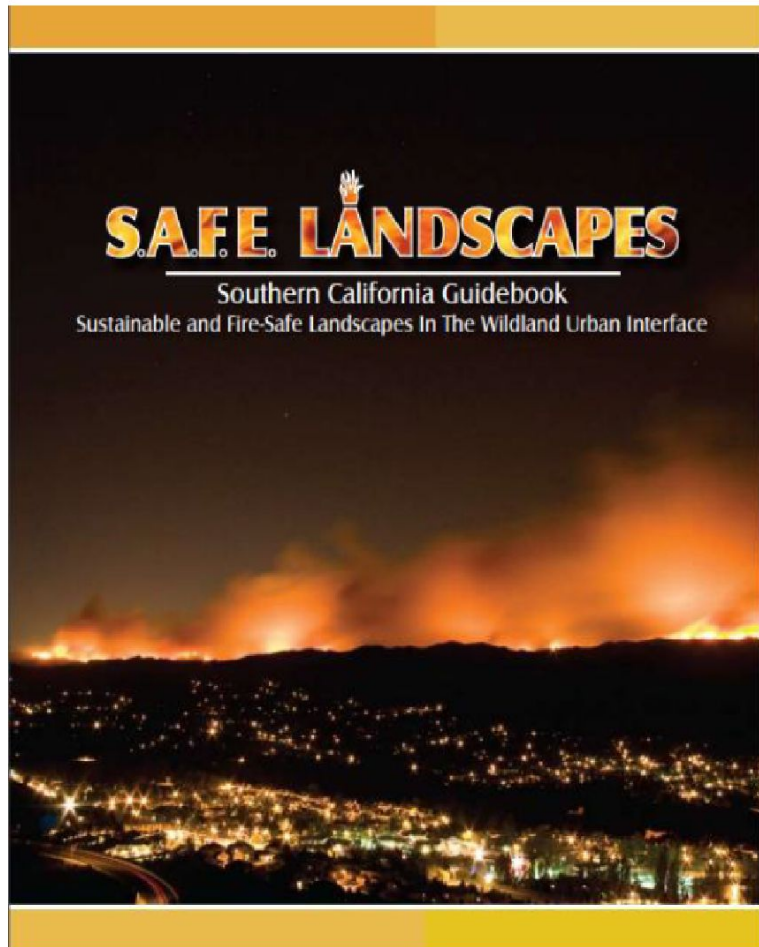
VERTICAL INTERPRETIVE PANELS  
78" x 48" x .25"

Laminated Foam Core  
Spectrum Color Ink

with drywall and roof of fire safe. The company is not built on top of the wall of a house, allowing it to be the primary structure. The Pacific States House, which features different types of walls and siding, is a prototype of what is being planned in Paso Robles, California.

# Demonstration gardens

## Right Plant Right Place



- Arroyo Grande
- San Luis Obispo
- Paso Robles



# FIREWISE COMMUNITIES

## FIREWISE COMMUNITY National Recognition

- Oak Shores
- Ranchita Estates
- Baron Canyon
- Cambria
- Heritage Ranch
- Varian Ranch
- Others





**More than  
an economic  
toll...**





# WILDFIRE IS COMING. ARE YOU READY?





Ready

Set

Go!

# COUNTY WIDE EVACUATION PLAN AND PREPAREDNESS



FUNDING FOR THIS PROJECT PROVIDED BY THE CALIFORNIA DEPARTMENT OF FORESTRY AND FIRE PROTECTION'S FIRE PREVENTION PROGRAM AS PART OF THE CALIFORNIA CLIMATE INVESTMENTS PROGRAM.

OFFICE OF EMERGENCY SERVICES COUNTY OF SAN LUIS OBISPO





# EVACUATION PLAN OBJECTIVES

- Standardize evacuation procedures countywide (LE/FD/OES)
- Improve public communication and safety during an emergency
- Provide the community with clear, timely information and rationale for evacuations
- Evacuate only those areas necessary
- Return people home as soon as possible

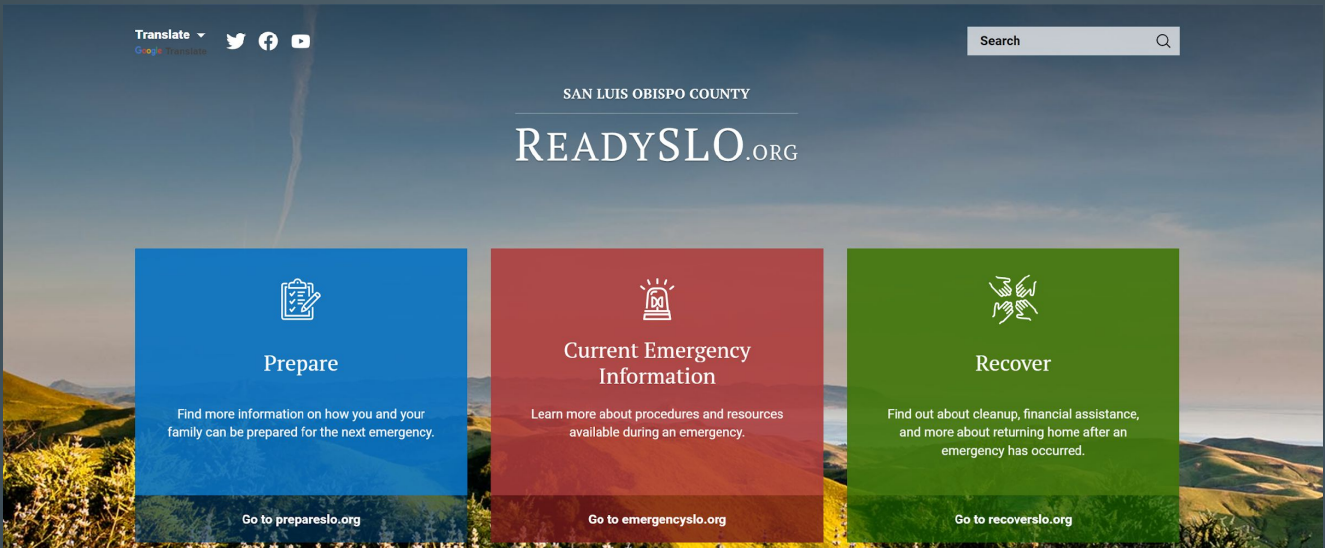




# WHAT IS THE ZONE PROGRAM?

- It is a protective actions notification system
- Designed for large scale evacuations for all hazard emergencies
- Standardized procedures and predesignated evacuation zones
- Coordinate Fire, Law, EMS, EOC, media, and public to be on the same page
- Public notifications with Alert Warning System






## Search

Enter an address or Zone ID into the search bar to check the status of the area

---


### MY CURRENT ZONE



Please allow location sharing for us to locate your current zone.

[Allow](#)


Or select a zone on the map to see the status




[View full screen](#)


[Back](#)

Zone  
**CMB-E012**

 123 Main Street, Cambria, California 93428, United States

Status  
**NORMAL**

**ALL CLEAR**   
No current knowledge of active incidents in your area.

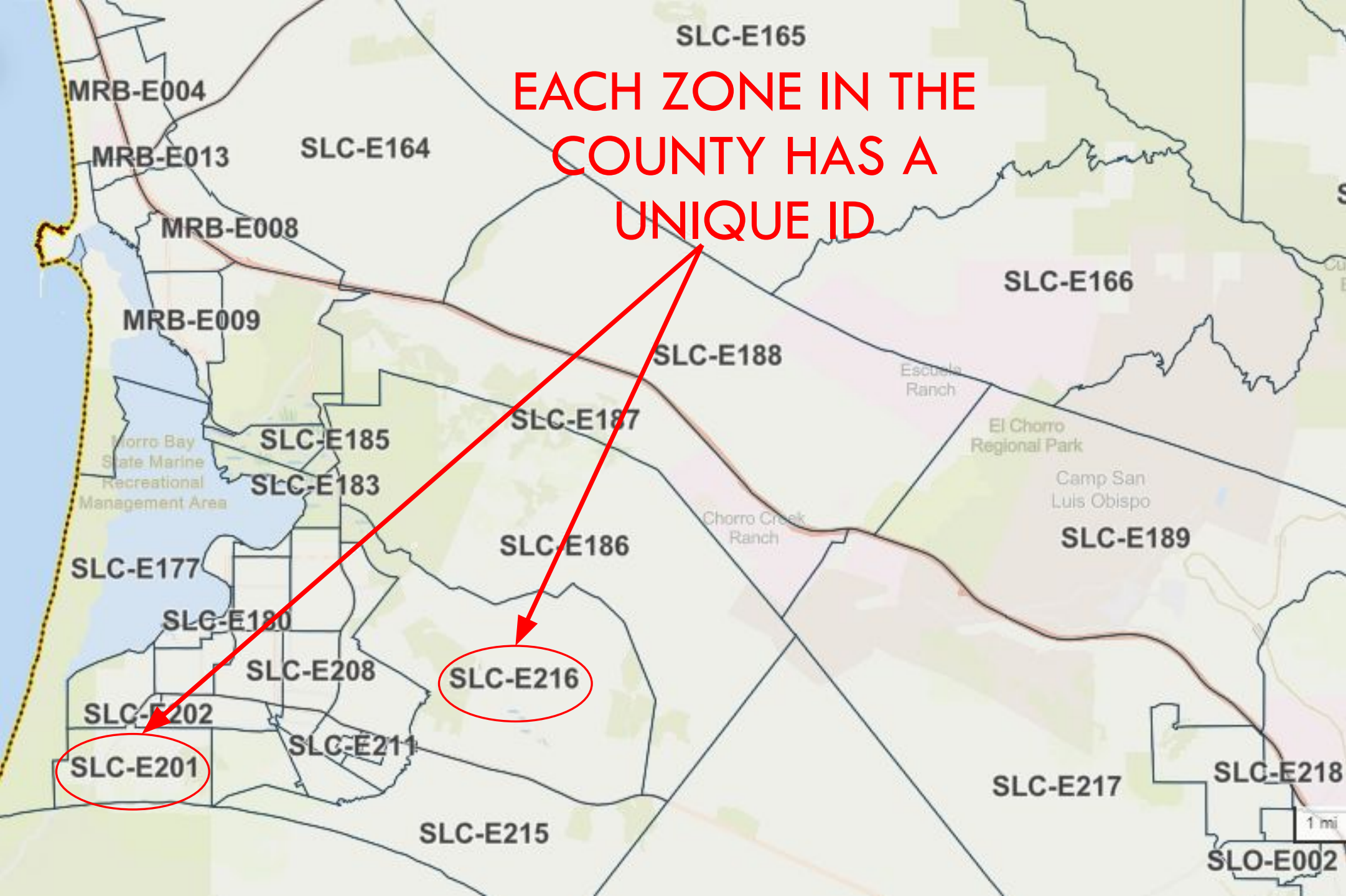
 **CRITICAL NOTIFICATIONS**

Never miss an alert, and receive critical notifications on the go with the genasys Protect mobile app

[Download app now](#)

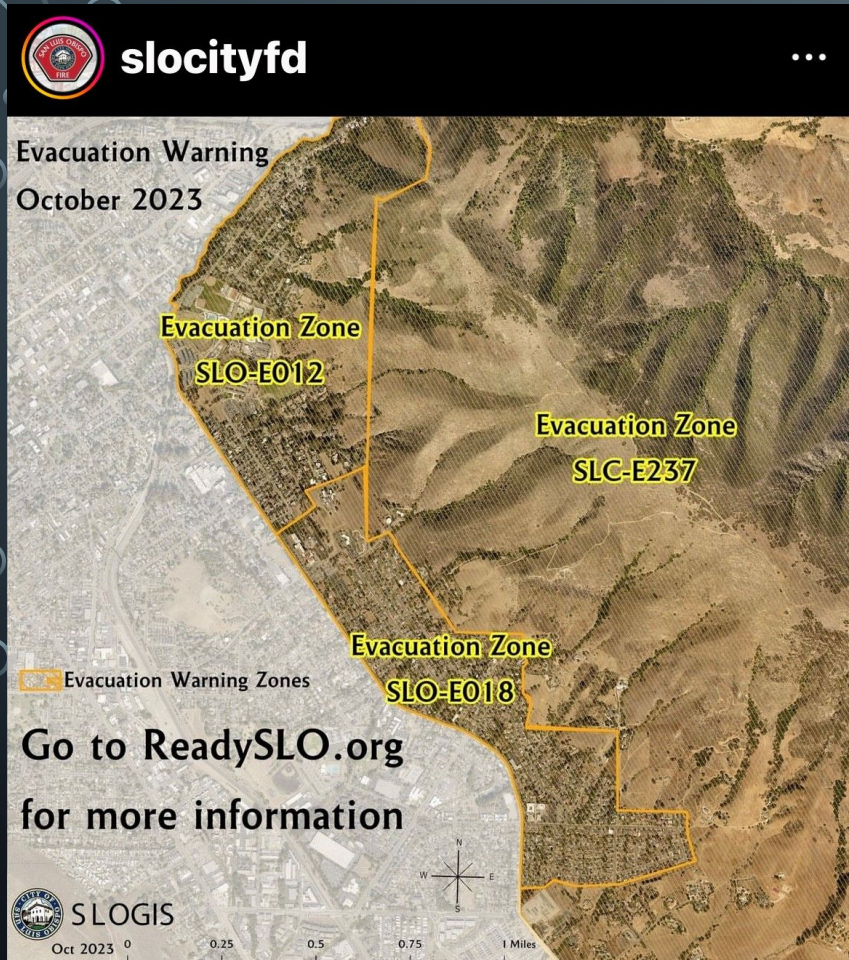


**EACH ZONE IN THE  
COUNTY HAS A  
UNIQUE ID**






# AGENCY ROLES AND RESPONSIBILITIES



- Public safety protective Actions determined by Agency Having Jurisdiction
- Field level evacuations implemented by Law Enforcement
- Public notification coordinated by Office of Emergency Services and AHJ Public Information Officer
- The public will be directed to [READYSLO.ORG](https://www.readySLO.org)
- Alerts will be used in conjunction with Wireless Emergency Alerts and other Alert Warning

# PUBLIC NOTIFICATION



**SAN LUIS OBISPO COUNTY  
SHERIFF'S OFFICE**

**Register Here for Emergency Notifications**

**Personal Info** <sup>i</sup>

**First Name \***

**Last Name \***

**Address \***  
  
(e.g., 123 Main Street)

**Address 2**  
  
(Apartment, unit, building, floor, etc.)

**City \***

**County**

**State**

**Zip Code \***

- SLO Co. Sheriff Reverse 911
  - Reverse 911 is a service that provides information to the public during a disaster or emergency.
  - Reverse 911 will call your phone with information on how to keep you and your family safe.
  - All landlines are automatically set up, but mobile-phones need to be registered with your address (Opt-In).

# EVACUATION PREPAREDNESS

- How to prepare your household:
  - Please visit our website [prepareslo.org](https://prepareslo.org)
  - Consider:
    - Sign up for Emergency Alerts
    - Prepare your household, make an Evacuation Plan!
      - *Know your Zone*
    - Review Ready-Set-Go
      - *Wildfire Planning*
    - Build 72-Hour supply Kit
    - Learn Basic First Aid and have a kit
    - Plan for Animals

SAN LUIS OBISPO COUNTY

READY.SLO.ORG



## Prepare

Find more information on how you and your family can be prepared for the next emergency.



## Family Preparedness

Find more information on how you and your family can be prepared for the next emergency



## Family Disaster Planning



## Emergency Supply Kit



## Kids

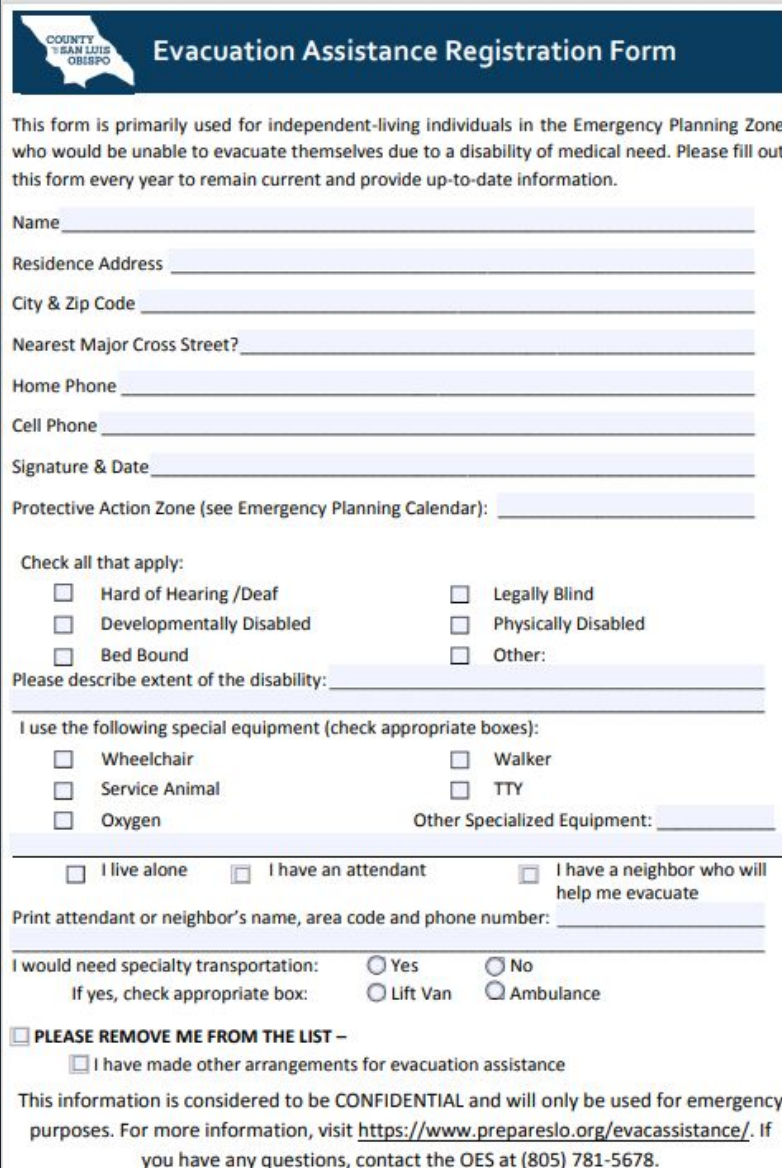


## Pets



# EVACUATION ASSISTANCE REGISTRATION

- The Evacuation Assistance Program is for independent-living individuals in San Luis Obispo County with disabilities or medical needs who would need assistance evacuating in an emergency.
- Forms available at:
  - <https://www.prepareslo.org/en/evacuation-assistance.aspx>
- Transportation is not guaranteed



**COUNTY OF SAN LUIS OBISPO** Evacuation Assistance Registration Form

This form is primarily used for independent-living individuals in the Emergency Planning Zone who would be unable to evacuate themselves due to a disability of medical need. Please fill out this form every year to remain current and provide up-to-date information.

Name \_\_\_\_\_

Residence Address \_\_\_\_\_

City & Zip Code \_\_\_\_\_

Nearest Major Cross Street? \_\_\_\_\_

Home Phone \_\_\_\_\_

Cell Phone \_\_\_\_\_

Signature & Date \_\_\_\_\_

Protective Action Zone (see Emergency Planning Calendar): \_\_\_\_\_

Check all that apply:

<input type="checkbox"/> Hard of Hearing /Deaf	<input type="checkbox"/> Legally Blind
<input type="checkbox"/> Developmentally Disabled	<input type="checkbox"/> Physically Disabled
<input type="checkbox"/> Bed Bound	<input type="checkbox"/> Other: _____

Please describe extent of the disability: \_\_\_\_\_

I use the following special equipment (check appropriate boxes):

<input type="checkbox"/> Wheelchair	<input type="checkbox"/> Walker
<input type="checkbox"/> Service Animal	<input type="checkbox"/> TTY
<input type="checkbox"/> Oxygen	Other Specialized Equipment: _____

I live alone     I have an attendant     I have a neighbor who will help me evacuate

Print attendant or neighbor's name, area code and phone number: \_\_\_\_\_

I would need specialty transportation:     Yes     No  
If yes, check appropriate box:     Lift Van     Ambulance

PLEASE REMOVE ME FROM THE LIST –  
 I have made other arrangements for evacuation assistance

This information is considered to be CONFIDENTIAL and will only be used for emergency purposes. For more information, visit <https://www.prepareslo.org/evacassistance/>. If you have any questions, contact the OES at (805) 781-5678.

The image features a dark blue background with white, stylized circuit board traces in the corners. These traces consist of lines and small circles, resembling electronic components or connections. The word "QUESTIONS" is centered in a large, white, sans-serif font.

# QUESTIONS



SAN LUIS OBISPO COUNTY

# FIRE SAFE COUNCIL

FIRESAFESLO.ORG

WHAT CAN I DO ?

WHAT ARE WE DOING ?

WHAT'S MY COMMUNITY DOING ?

DOWNLOADS



**READY!**  
**SET! GO!**

# READY.. SET.. GO!!

# OVERVIEW

## Get Ready..

- > Hardening Your Home
- > Defensible Space
- > Defensible Space
- > Fire-Smart Landscaping
- > Firewise Communities
- > Seasonal Actions
- > Dead Tree Removal
- > Debris Burning

## Get Set..

- > Wildfire Action Plan
- > Prepare Your Family
- > Create Your Go Bag
- > Insurance

Preparedness

## Go!!

>Evacuation  
Guide

# WHEN TO “GO!”

- **Stay Informed** Listen for updates on potential evacuations.
  - “Know your Zone” Co. OES ([readyslo.org](http://readyslo.org))
  - PULSEPOINT Co. Fire (Google & Apple store)
  - Reverse 911, Co. Sheriffs
  - Local TV , Radio & Media (KSBY, X, and Facebook)
  - FIRESAFESLO.ORG (All these links are on our website)

**Act Fast:** Leave without delay when advised, even before mandatory orders.



# WHICH ZONE IS TO “GO!”

LIKELY EVACUATION ORDER



LIKELY EVACUATION WARNING



# WHAT SHOULD “GO!”

- YOUR “Go BAG” CHECKLIST

- **P**rescriptions (Rx)
- **P**hone (Chargers ect..)
- **P**hotos (valuables)
- **P**ants ( 3 Days)
- **P**ets (Food/ ect..)
- **P**apers (Passports / Birth Certs)



# WHERE TO “GO!”

## LEAVE - LOS OSOS

1. Evacuation to HWY 1
2. Evacuation to HWY 101

**!! SINGLE EGRESS  
NEIGHBORHOOD !!**

3. **Primary Roads to Egress**

Los Osos Valley Road

South Bay Blvd

Bayview Heights Dr





# ROUTES TO "GO!!"

## HIGHLAND DR / CABRILLO ESTATES

LADRS

LO

Summary

Detailed Report

Addresses evacuated

308

Passenger Cars

603

Heavy Vehicles

12

Total Clearance Time ⓘ

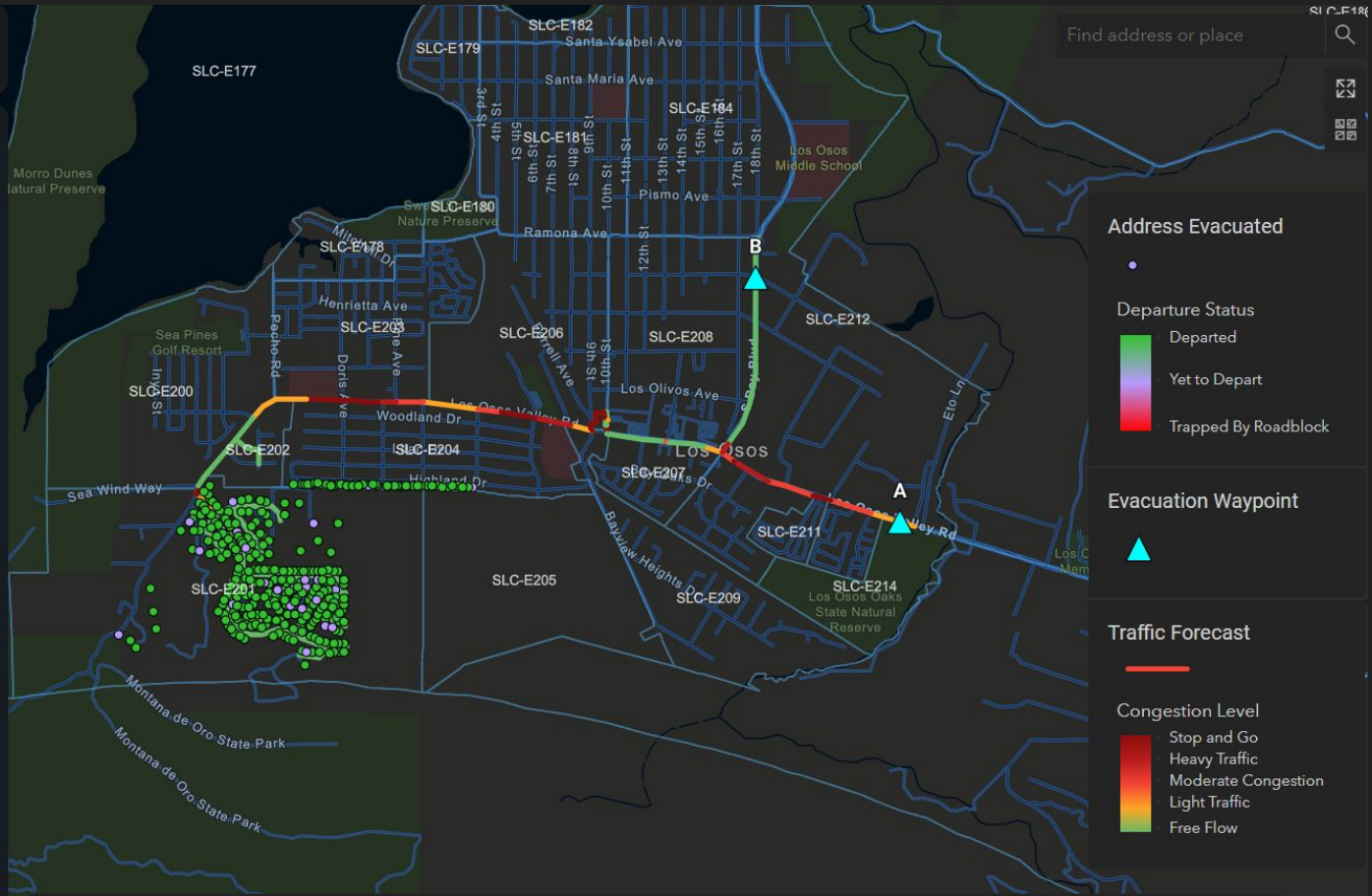
1h 24m

Response Time ⓘ

1h 0m

Trip Time ⓘ

37m





SAN LUIS OBISPO COUNTY

# FIRE SAFE COUNCIL

FIRESAFESLO.ORG

WHAT CAN I DO ?

WHAT ARE WE DOING ?

WHAT'S MY COMMUNITY DOING ?

DOWNLOADS

# ?? Questions & Discussion ??



**Greg Alex**

Community Project Coordinator

SLO FireSafe Council

Contact : [greg@firesafeslo.org](mailto:greg@firesafeslo.org)

Website: [www.firesafeslo.org](http://www.firesafeslo.org)



# SimTable

LOS OSOS - CABRILLO ESTATES

# Fire Resource HIGH Dispatch - Los Osos

## WILDLAND FIRE

- 1 – Chief Officer (Los Osos)
- 1 – Air Attack (Paso 15 min)
- 3 – Air Tankers (Paso 15 min)
- 1 – Type 1 Helicopter (Paso 15 min)
- 1 – Type 2 Helicopter  
(Arroyo Grande (20 min))
- 1 – Type 3 Safety Officer (Los Osos)
- 2 – Type 1 Engines  
(E15 Los Osos / Morro Bay 10min)
- 5 – Type 3 Engines  
(Cayucos 15min / SLO 15 min/ Shell  
Beach 25 min / 2 ENG Parkhill 25 min)
- 2 – Type 1 Hand crews (Cuesta Camp 15 min)
- 2 – Dozers ( SLO 15 min / Parkhill 25 min)
- 1 – Water Tender ( Paso 25 min)
- 1- Fire Investigator

## SCENARIO #1

### Fire Reported **Behind 250 Madera St.**

Wind 320 degrees, 30 mph (Prevailing NW winds)

Fire moves SE along San Dominico Dr., and crosses Rodman Dr. at about 1:20 to 1:30 hours.

It moves up-slope, along a low ridge, to cross the middle of Travis Dr., and on to Crockett Cir. After crossing Rodman Dr. the fire moves up-slope, on the hillside above, and west of Rodman Dr.



## SCENARIO #2

Fire Reported **In grass field Travis Dr. / Sea Horse Ln.**

Field of grass and chaparral.

Wind 45 degrees. 40 mph (Late summer Santa Lucia winds)

The fire moves into the homes, and crosses Travis Dr. at the corner, to Crockett Cir, and Houston Dr.. The fire continues up-slope to Rodman Dr and Alamo Dr.