

"Get Ready"

- Provide defensible space around structures for a distance of at least 100 feet.
- Clear flammable materials from rain gutters and roof.
- Trim tree branches at least 10 feet from chimney.
- Clear at least 10 feet around propane tanks.
- For more information on legal requirements see www.calfireslo.org
- Replace flammable vegetation with less flammable plants.
- Use fire-resistant materials for roofing and siding.
- Move wood piles away from house.
- Make sure your water tank is full and the hydrant is accessible and marked with a blue reflector.
- Have garden hose and ladder available that will reach the roof.
- Locate escape routes and Temporary Refuge Areas. (See map inside)
- Have an escape plan. Know where to meet your family.
- Choose an out-of-area friend or relative as a check-in contact. Write his/her phone number on the phone list inside.

"Get Set"

- Evacuate as soon as you are set.
- Alert family and neighbors.
- Dress in appropriate clothing (i.e., long pants, long sleeved shirt, goggles or glasses, hat and a dry bandana over your face. Cotton clothing is best).
- Ensure that you have your emergency supply kit on hand that includes all necessary items, such as battery powered radio, spare batteries, emergency contact numbers, and ample drinking water.
- Tune in to any local radio or TV station for updates and information.
- Remain close to your house, drink plenty of water and keep an eye on your family and pets until you are ready to leave.

CHECKLIST:

What to do if a wildfire is approaching

- Park vehicles facing outward.
- Put valuables, important documents and essentials, such as medications, in your vehicle.
- Keep keys where you can find them.
- Secure pets and prepare them for transport. Horse owners may call the Horse Emergency Evacuation Team (HEET) for assistance. See phone list for number.
- Close shutters, windows, heavy drapes and fireplace dampers.
- Remove thin drapes and other flammables near windows.
- Turn on outside lights and leave some inside lights on.
- Turn off gas at meter or propane tank.
- Safely make your way out of the area. If unable to evacuate completely, go to the closest Temporary Refuge Area (see map).
- Drive with headlights on.

"Go"

- Citizens may be notified by fire personnel and/or law enforcement personnel if evacuation is necessary.
- Safely make your way out of the area. If unable to evacuate completely, go to the closest Temporary Refuge Area. (See map inside)
- The Red Cross will establish evacuation centers.
- If evacuated, contact the Red Cross to provide information about your status so that family or friends can be informed.
- After an area has been evacuated, the area will remain closed until the threat has passed.
- MOST IMPORTANTLY, if you feel unsafe, don't wait. Follow the checklist items and get out.

www.calfireslo.org



635 North Santa Rosa St.
San Luis Obispo, CA 93405

Atascadero

FIRE EVACUATION PLAN

Ready...Set...GO!

You live in wildfire country...
Are you prepared to evacuate?



If You Become Trapped

In your home:

- Stay inside until the fire passes.
- Close all windows.
- Keep all doors closed, but unlocked.
- Keep family together and remain calm.
- Remember, if it gets hot inside your house, it will be much hotter outside.

In your car:

- Park away from vegetation.
- Roll up windows.
- Cover mouth with dry cloth to protect airway.
- Cover mouth with dry cloth to protect airway.
- Cover yourself with a blanket or jacket.
- Stay in the car until the fire passes.
- If the vehicle catches on fire, exit only after the wild-fire has passed.

On foot:

- Find an area away from vegetation.
- Lie face down.
- Cover mouth with dry cloth to protect airway.

After the Fire Passes

- Check the roof and exterior of your home, extinguish all sparks and embers.
- Check your attic for hidden embers.
- Check your yard for burning wood piles, trees, fence posts or other materials.

Returning to Your Home

- Emergency Managers will decide when it is safe to return.
- Information will be available through the media, at road blocks, shelters, and the CAL FIRE information line.

Brought to you by:



CAL FIRE/ San Luis Obispo
County Fire Department

San Luis Obispo
County Fire Safe Council



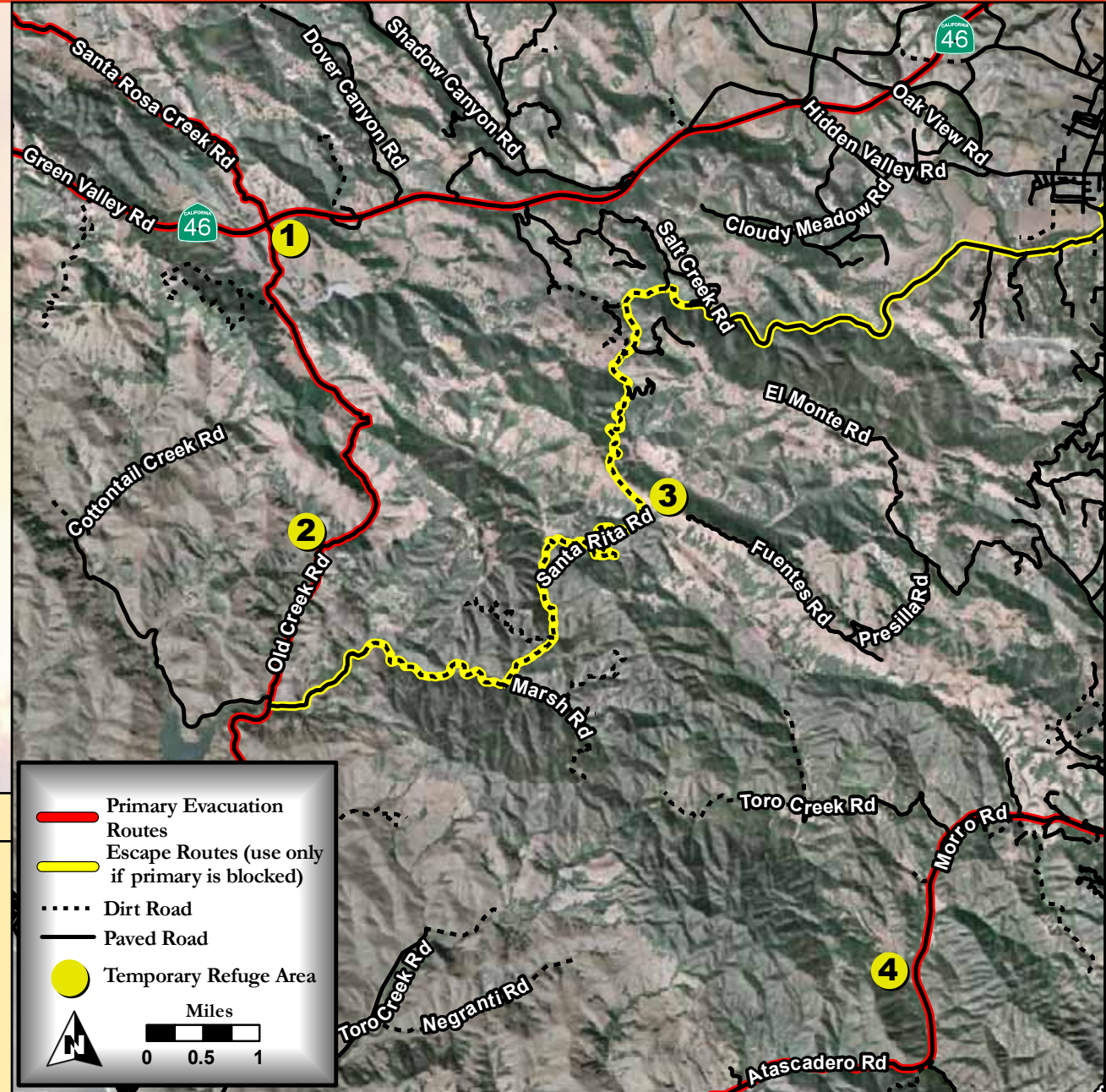
KEEP THIS EVACUATION PLAN FOR REFERENCE

Atascadero Area Evacuation Emergency Travel Routes & Temporary Refuge Areas

Temporary Refuge Areas

A gathering for residents if evacuation routes are obstructed by smoke, incoming emergency equipment, or directly threatened by fire.
Examples: lee side of structure, inside of structure, large lawn or parking area, cab of apparatus.

- 1 Highway 46 West & Santa Rosa Creek Road
- 2 2495 Old Creek Road
- 3 Santa Rita Road & Fuentes Road
- 4 Morro Toro Fire Station 14 - 15615 Highway 41 West



IMPORTANT PHONE NUMBERS

Life Threatening Emergencies: 911

Non-emergency numbers

CAL FIRE _____ (805) 543-4244
 County Sheriff _____ (805) 781-4550
 Horse Emergency Evac. Team (HEET) _____ (805) 466-7457
 Animal Control _____ (805) 466-7457
 Red Cross _____ (805) 543-0696
 My out-of-area contact _____