

# LODGE HILL

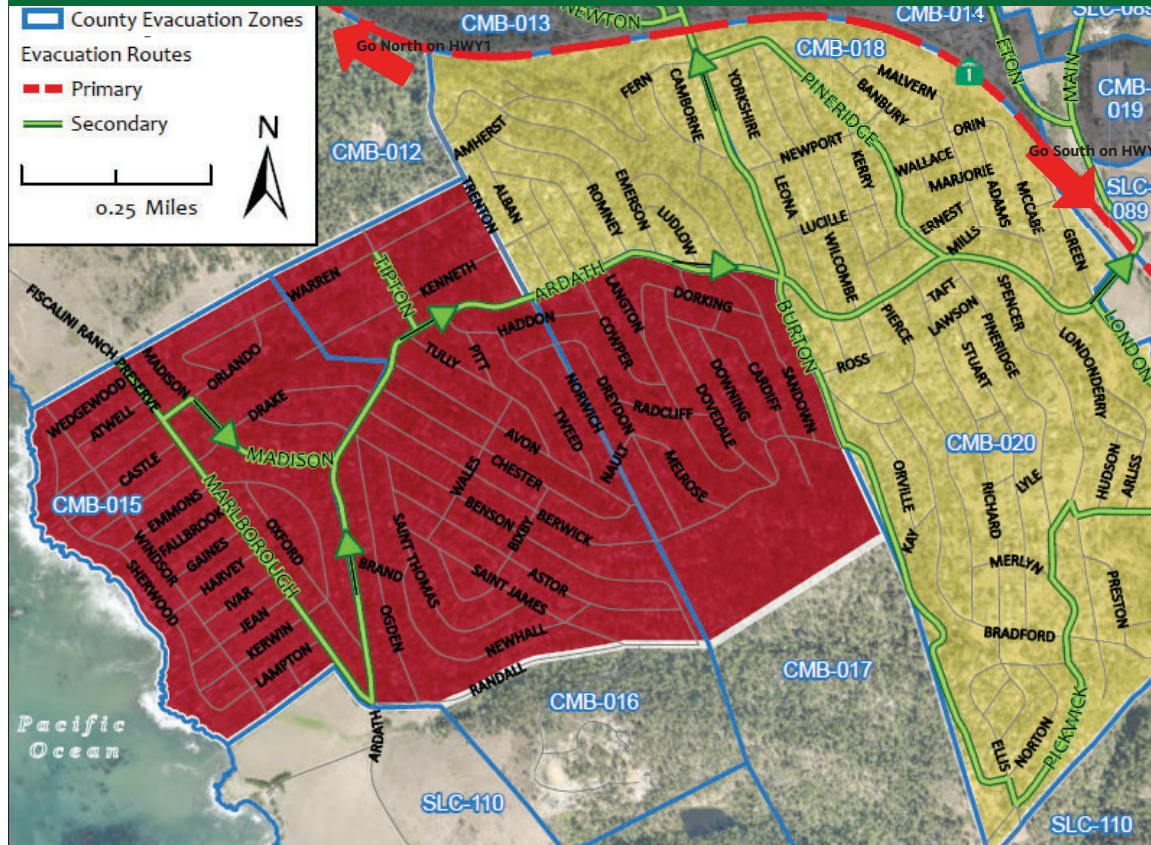
# Leave Early!



Scan this QR code to view your neighborhood map on our evacuation viewer on your phone or tablet!



**Familiarize yourself with major routes out of your neighborhood in case of an evacuation**



## EVACUATION SAFETY TIPS

**What to wear?** Wear goggles, leather gloves, and heavy shoes/boots; protect skin with long cotton or wool clothing; protect airway and face with an N95 mask and bandanna. Wear a hat to protect hair from embers.

**Where to go?** Avoid hillsides. Head for a valley floor by car, away from the fire if possible.

**Last resort...** Go on foot or bicycle only if no other option exists. Sheltering indoors or in a car is usually safer than being exposed outside.

**Never evacuate** uphill, on fire roads, or into open spaces where there is unmaintained vegetation.

**Don't panic** in traffic! Inside a car on pavement is one of the safest places during a wildfire.

## EMERGENCY ALERTS & FIRE INFORMATION

**WILDFIRES CAN STRIKE SUDDENLY AND WITHOUT WARNING.** EMERGENCY MANAGERS WILL ATTEMPT TO NOTIFY RESIDENTS WHEN EVACUATION IS NECESSARY, BUT THIS IS NOT ALWAYS POSSIBLE. ADVANCE PREPARATION AND SITUATIONAL AWARENESS ARE REQUIRED.

[www.readyslo.org](http://www.readyslo.org): Emergency Notifications

### For ACTION at a specific ADDRESS

Get critical evacuation and life safety information during emergencies, at a specific address including Voice, Text, and Email messages and **REVERSE 911** REGISTER AT:

[www.firesafeslo.org](http://www.firesafeslo.org)

### PULSEPOINT: Fire Dispatch Information

#### For LIVE Dispatch Information

- General information about Fire Incidents
- Resources Dispatched and Time Commitment

### AM/FM RADIO, SOCIAL MEDIA: Radio News; X Links

Monitor FM 98.1, AM 920; AM 1400; AM 1180; FM 95.3; FM 102.7

Follow: @SLOCountyOES, @CALFIRE\_SLO, @FireSafeSLO

NOAA Radios: tune to 162.500 or 162.400 (same code 006041)

San Luis Obispo County OES  
[www.readyslo.org](http://www.readyslo.org)

Cambria Fire Department  
[cambriacsd.org/cambria-fire-department](http://cambriacsd.org/cambria-fire-department)

CAL FIRE - San Luis Obispo  
[www.calfireslo.org](http://www.calfireslo.org)  
SLO FireSafe Council  
[www.firesafeslo.org](http://www.firesafeslo.org)

# Your evacuation checklist:

**WILDFIRES CAN STRIKE SUDDENLY AND WITHOUT WARNING.** EMERGENCY MANAGERS WILL ATTEMPT TO NOTIFY RESIDENTS WHEN EVACUATION IS NECESSARY, BUT THIS IS NOT ALWAYS POSSIBLE. ADVANCE PREPARATION AND SITUATION AWARENESS ARE REQUIRED. TAKE PERSONAL RESPONSIBILITY AND PREPARE TODAY.



## Always do this...

### PREP YOUR COMMUNICATIONS:

- **Keep** your cell phone fully charged.
- **Notify** an out-of-area contact of your phone number, location and status. Update regularly.
- **Leave** a note with your contact info and out-of-area contact taped to fridge or inside a front window.
- **Check** on or call neighbors to alert

### KEEP ON YOUR PERSON:

- **Dress** all family members in long sleeves and long pants; heavy cotton is best, no matter how hot it is.
- **Wear** full coverage goggles, leather gloves, head protection.
- **Cover** faces with a dry cotton bandana or scarf over an N95 respirator.
- **Tie** long hair back.
- **Take** a headlamp and flashlight (even during the day).
- **Carry** car keys, wallet, ID, cell phone, and spare battery.
- **Drink** plenty of water, stay hydrated.
- **Put "Go Kits"** (see right checklist) in your vehicle.

### PETS AND ANIMALS:

- **Locate** your pets and place in carriers NOW. You won't be able to catch them when the fire approaches.
- Be sure your pets wear tags and are registered with microchips.
- **Place** carriers (with your pets in them) near the front door, with fresh water and extra food.
- **Prepare** horses and large animals for transport and consider moving them to a safe location early, before evacuation is ordered.



## When you leave...

- **Leave immediately** if ordered.
- **Don't wait**—if you feel unsafe or conditions worsen, leave early.
- **Assist** elderly or disabled neighbors.
- **Carpool** with neighbors to reduce traffic.
- **Take** only essential vehicles with adequate fuel.
- **In your car**, turn on headlights, close windows, turn on inside air and AC, tune to local radio.
- **Drive slowly** and be observant. Obey the rules of the road.
- **Proceed downhill**, away from the fire if possible. Know at least two routes, if possible.
- **Take the fastest paved route** to a valley floor.
- **Don't panic** in traffic.

### IF YOU ARE TRAPPED:

- **Try to take shelter** in a building, car, or an open area; you are better protected inside a building or vehicle.
- **Don't** abandon your car in the road. If you must leave your car, park it off the road and consider options for shelter.
- **Park** in an outside turn if trapped on a hillside in your car.
- **Stay far from unburned** vegetation (30' or more); look for wide roads, parking lots, playing fields, etc.
- **Evacuate on foot or bicycle only** as a last resort. A car provides better protection!
- **Don't evacuate by** fire road, uphill, or into open-spaces near unburned vegetation.
- **Remain calm**—panic is deadly.



## If time allows...

IN SOME SITUATIONS WHEN EVACUATION IS ANTICIPATED, YOU MAY HAVE TIME TO PREPARE YOUR HOME TO GIVE IT A BETTER CHANCE OF SURVIVAL. LEARN MORE AT:

[www.firesafeslo.org/evacuation](http://www.firesafeslo.org/evacuation)



## WILDFIRE & EMERGENCY Go Kit

- Sturdy shoes or boots
- Long sleeve shirt, long pants (cotton or wool, bright colors are best)
- Floppy cotton hat (to keep embers out of hair)
- Leather work gloves
- Full coverage goggles
- N95 respirator
- Cotton bandana for face protection
- A copy of this flyer and map
- Prescriptions medications (ask your doctor for a multi day emergency supply, rotate annually)
- Battery & charger for cell phone
- Extra eyeglasses or contact lenses
- Extra set of car keys
- Credit cards, cash or traveler's checks
- First aid kit (compact)
- Headlamp and Flashlight (handheld)
- Battery-powered AM/FM radio
- Spare batteries
- Sanitation supplies
- Copies of important documents (birth certificates, passports, etc.)

### PET SUPPLIES:

- Carriers for each pet
- Leashes
- Pet food and water

### ITEMS TO TAKE IF TIME ALLOWS:

- Easily carried valuables
- Family photos and other small, irreplaceable items
- PC data backups on hard drives and/or disks (offsite or "cloud" backup is best)
- Laptop or tablet & spare chargers

